

FOUNDATION SCHOLARSHIP AND GRANT PROGRAMS

In addition to contributions from annual campaigns dedicated to major initiatives, the Foundation reserves funds each year to support student scholarships and smaller grants for special purchases and programs.

Scholarship Program

Scholarships are awarded annually to high school seniors who have demonstrated academic growth and community commitment in their actions. We're proud to support many wonderful individuals, who demonstrate laudable personal values and whose futures promise continued strong contribution.

To qualify, applicants must have attended PHCS during grades 4-8, be attending a receiving high school, and be entering an accredited educational institution following high school graduation.

Grant Program

The mini-grant program supports meaningful projects and programs that teachers, administrators, parents and students propose. Over the years, these grants have funded a wide range of educational opportunities—from digital cameras and large-screen computer monitors to circus programs, foreign language literature, special education videos, and much more.

YOUR CONTRIBUTIONS ARE AN INVESTMENT IN THE FUTURE OF OUR CHILDREN

Help us enrich the experience for Pocantico Hills Central School students as they prepare for the challenges of an increasingly demanding and technologically complex world. Their accomplishments reflect positively on the school, the community and all those who help them realize their full potential.

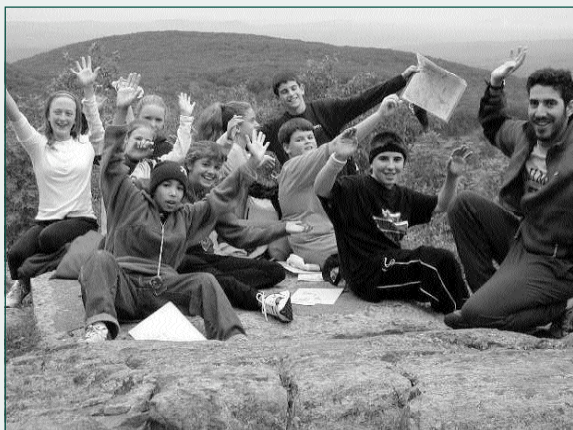
How You Can Help

Tax-deductible donations, event sponsorship and contributions of time and specialized services are all ways individuals, corporations and institutions can participate in Foundation activities and campaigns.

Donations should be sent to:

Pocantico Hills School Foundation
599 Bedford Road, Sleepy Hollow, NY 10591

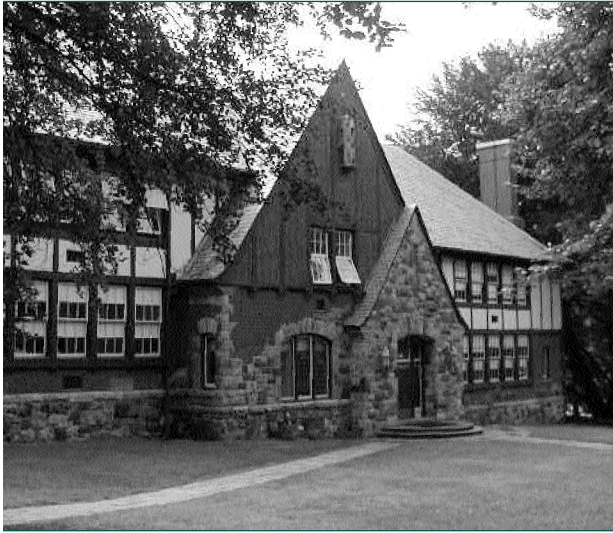
Please call us at (914)631-2440 to discuss the many ways you can participate.



INVESTED IN THE FUTURE



 POCANTICO HILLS SCHOOL
FOUNDATION



The **Pocantico Hills Central School** is a special place. Located in a quiet hamlet, it draws students from a ring of communities including Sleepy Hollow, Briarcliff Manor, Pleasantville, Elmsford and Valhalla.

Children from every economic bracket and nearly every major race and religion on the globe give the school a unique cultural diversity. Our students consistently score with the top schools in the state. They benefit from a dedicated teaching staff committed to basic skills, small class size and actively involved parents. Other benefits include foreign languages from second grade, an on-campus pool and a variety of programs for enhanced learning and highly gifted students. This special environment, not often found in the public sector, is expensive to maintain. The **Pocantico Hills School Foundation** plays an integral role in preserving and enhancing these opportunities for our children.

OUR MISSION

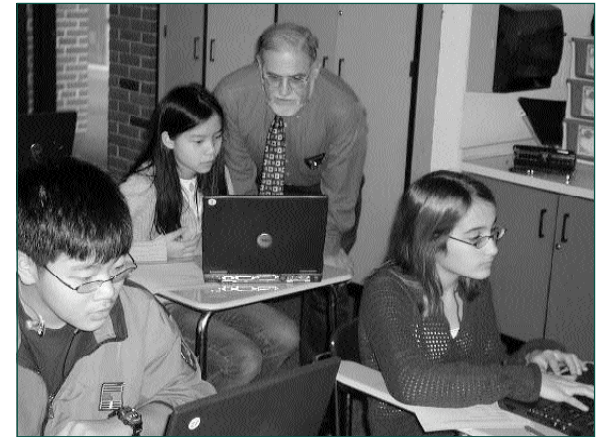
The **Pocantico Hills School Foundation** is a 501(C)(3) organization founded in 1995 to raise funds and encourage support for educational projects and programs beyond the scope of the school budget. Working in close cooperation with the School Board, we strive to:

- Encourage *involvement* by parents, alumni, the community and local businesses
- Develop and support *enrichment opportunities* for the students
- Provide *financial support* for educational projects and programs



OUR CONTRIBUTIONS

Since 1995, the Foundation has provided more than \$130,000 for major initiatives throughout the school.



Fund raising Campaigns Past and Present:

- Constructed new playgrounds and renovated soccer, baseball and softball fields
- Purchased modern reference book collection for middle school library
- Refurbished school auditorium
- Enhanced physical education department with weight training facility
- Completely renovated computer training laboratory
- Purchased state-of-the-art wireless, mobile lab of twenty laptop computers
- Extensively renovated school library, including replacement of over 20% of the collection